

# SHADOWSPEC UNITY™

THE EVOLUTION OF SHADE



## PATENT-PENDING TECHNOLOGY

### SHADOWLIFT™



Gas-assisted, anti-gravity, easy lift. The most advanced umbrella deployment system in the industry.

### SHADOWGLIDE™



Using calculated geometry and expert engineering to open or close your umbrella in 3 seconds.

### SHADOWLOCK™



Integrated into the mast of the umbrella, a functional solution to 360 degree umbrella rotation.

### SHADOWHUB



Our flagship umbrellas have built in LED lights in the central hub.

## CANOPY OPTIONS

### Features

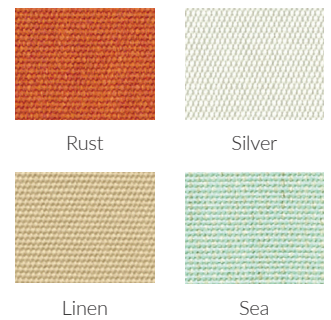
- 100% Sunbrella™ Marine solution-dyed fabric
- All fabrics can be cleaned, washed and are replaceable
- UV & Fade Resistant
- 10 year Sunbrella™ warranty
- Mould and Mildew Resistant
- Weight: 314 g/m2
- Sun protection - Skin Cancer Foundation's seal of approval

### Stock Colour Options



Full Sunbrella range is available as a custom, non-stock colour option.

### Trend Colours Summer 19/20\*



\*Trend colours are non-stock and lead times may vary for non-stock colours.



## BEST-IN-CLASS WARRANTY

Relax easy knowing your outdoor umbrella purchase is protected by the industries best warranty and customer support.



Fabric  
Warranty



Frame  
Warranty

# MOUNTING OPTIONS

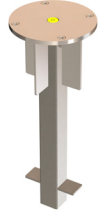
## Surface Plate

For deck, patio and concrete mounting.



## In-Ground Anchor

For mounting with a concrete footing.



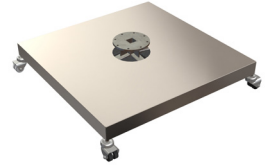
## Wall Fixings

For when ground mounting isn't possible.



## Free-standing Base

For complete customised maneuverability.

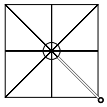


Pavers are required for ballast and are not supplied.  
Optional castor wheels shown.

# SIZE & CONFIGURATION

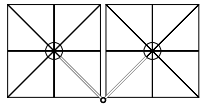
## Square Uno

2.5m & 3.0m



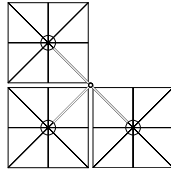
## Square Duo

5.0m & 6.0m



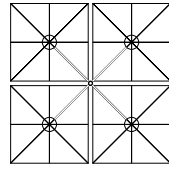
## Square Trio

5.0m & 6.0m



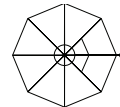
## Square Quattro

5.0m & 6.0m



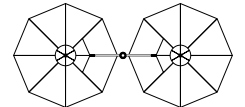
## Octagon Uno

3.5m & 4.0m

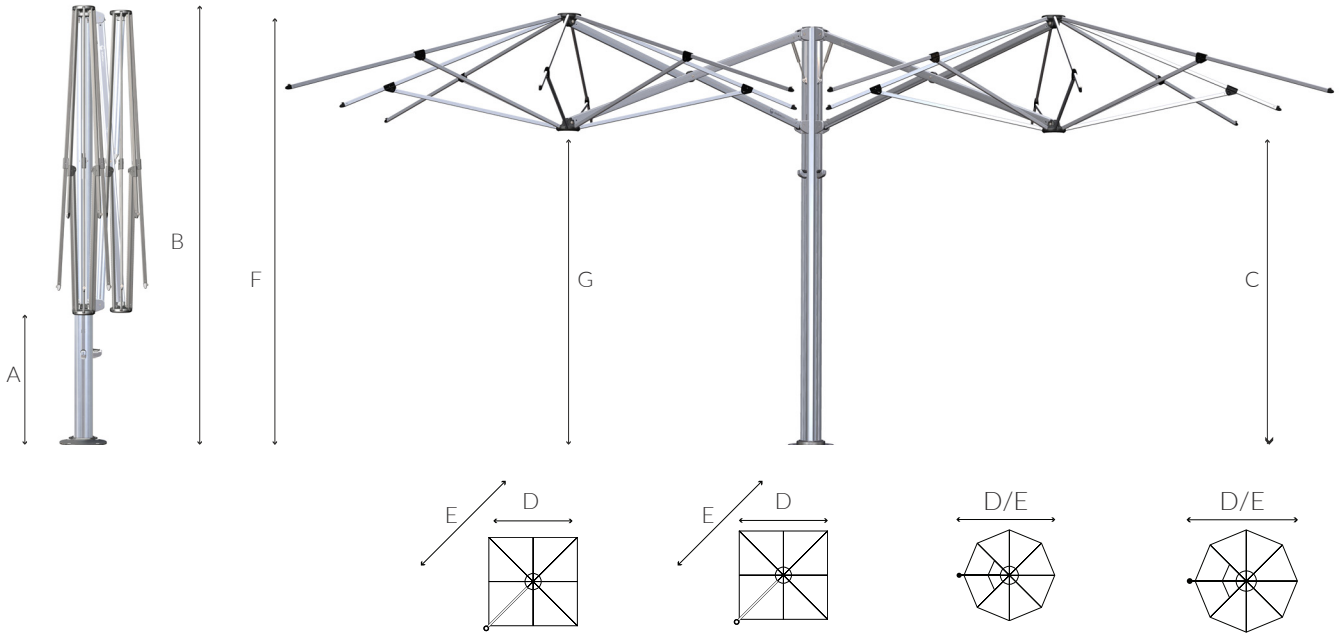


## Octagon Duo

7.0m & 8.0m



# UMBRELLA DIMENSIONS



## Diagram Legend

	2.5m	8'2"	3.0m	9'10"	3.5m	11'6"	4.0m	13'2"	
<b>A</b>	Ground to central frame hub when closed*	870mm	2'10"	623mm	2'1"	1096mm	3'7"	848mm	2'9"
<b>B</b>	Height of umbrella to top of mast cap*	2916mm	9'7"	2916mm	9'7"	2916mm	9'7"	2916mm	9'7"
<b>C</b>	Ground to lower outer edge of canopy*	2235mm	7'4"	2232mm	7'4"	2249mm	7'5"	2190mm	7'2"
<b>D</b>	Centre of mast to outside edge of canopy	2665mm	8'9"	2993mm	9'10"	3500mm	11'6"	4000mm	13'2"
<b>E</b>	Diagonal from centre of mast to corner	3639mm	11'11"	4101mm	13'6"	3473mm	11'5"	3950mm	13'0"
<b>F</b>	Total height to top of canopy*	2905mm	9'6"	2830mm	9'3"	2985mm	9'10"	2908mm	9'7"
<b>G</b>	Ground to central frame hub when open*	2163mm	7'1"	2084mm	6'10"	2239mm	7'4"	2162mm	7'1"

\*Portable Base installations will add 165mm to these measurements. Adding portable base wheels also will add a further 45-80mm/2-3". All sizings are +/- 2.5mm / 3/32" and subject to change without notice.

# SHADOWSPEC SERENITY™

PRECISION ENGINEERED AMBIENCE



## PATENT-PENDING TECHNOLOGY

### SHADOWLIFT™



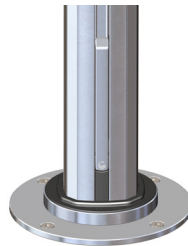
Gas-assisted, anti-gravity, easy lift. The most advanced umbrella deployment system in the industry.

### SHADOWGLIDE™



Using calculated geometry and expert engineering to open or close your umbrella in 3 seconds.

### SHADOWLOCK™



Integrated into the mast of the umbrella, a functional solution to 360 degree umbrella rotation.

### SHADOWHUB



Our flagship umbrellas have built in LED lights in the central hub.

## CANOPY OPTIONS

### Features

- 100% Sunbrella™ Marine solution-dyed fabric
- All fabrics can be cleaned, washed and are replaceable
- UV & Fade Resistant
- 10 year Sunbrella™ warranty
- Mould and Mildew Resistant
- Weight: 314 g/m2
- Sun protection - Skin Cancer Foundation's seal of approval



### Stock Colour Options



Natural



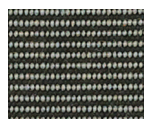
Oyster



Cadet Grey



Taupe



Charcoal Tweed



Charcoal Grey



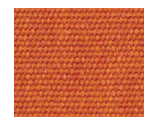
Black



Captain Navy

Full Sunbrella range is available as a custom, non-stock colour option.

### Trend Colours Summer 19/20\*



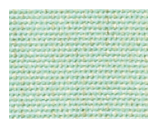
Rust



Silver



Linen



Sea

\*Trend colours are non-stock and lead times may vary for non-stock colours.

## BEST-IN-CLASS WARRANTY

Relax easy knowing your outdoor umbrella purchase is protected by the industries best warranty and customer support.



Fabric  
Warranty

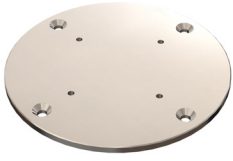


Frame  
Warranty

# MOUNTING OPTIONS

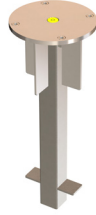
## Surface Plate

For deck, patio and concrete mounting.



## In-Ground Anchor

For mounting with a concrete footing.



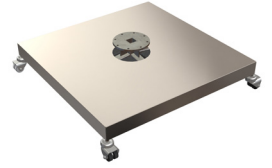
## Wall Fixings

For when ground mounting isn't possible.



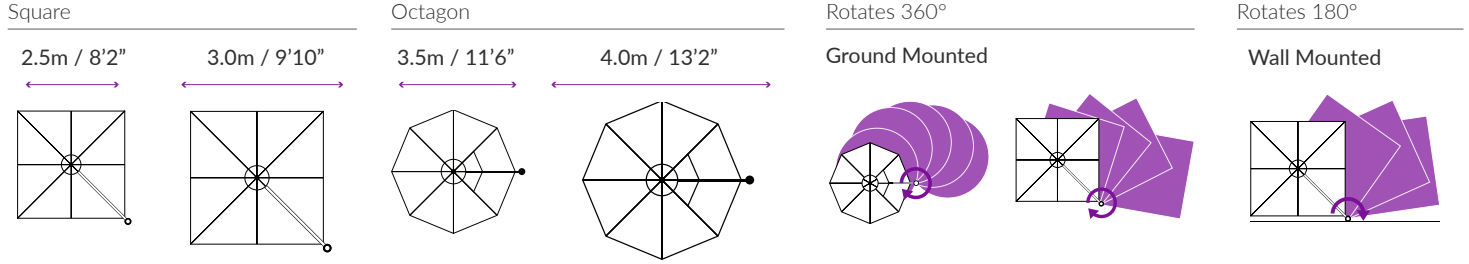
## Free-standing Base

For complete customised maneuverability.

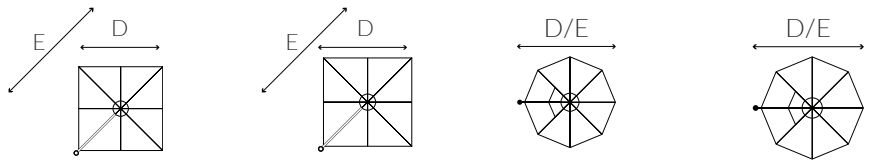
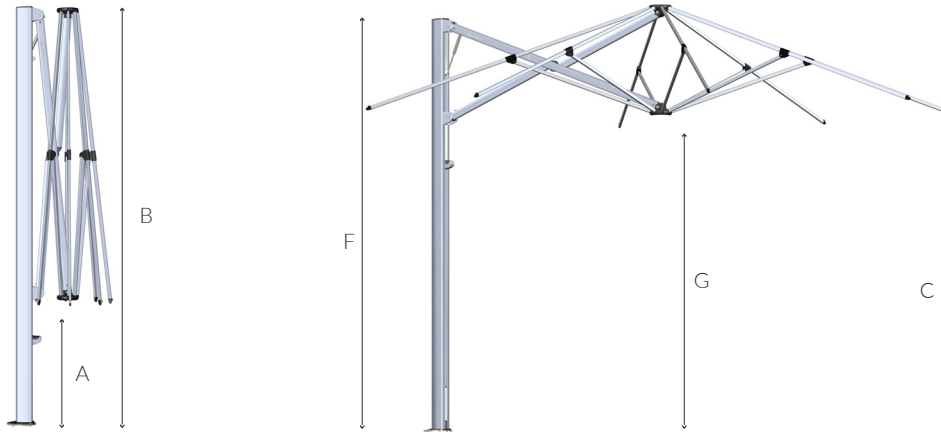


Pavers are required for ballast and are not supplied.  
Optional castor wheels shown.

# SIZE & CONFIGURATION



# UMBRELLA DIMENSIONS



## Diagram Legend

	2.5m	8'2"	3.0m	9'10"	3.5m	11'6"	4.0m	13'2"	
<b>A</b>	Ground to central frame hub when closed*	857mm	2'10"	610mm	2'0"	1083mm	3'7"	835mm	2'9"
<b>B</b>	Height of umbrella to top of mast cap*	2903mm	9'6"	2903mm	9'6"	2903mm	9'6"	2903mm	9'6"
<b>C</b>	Ground to lower outer edge of canopy*	2222mm	7'4"	2219mm	7'3"	2236mm	7'4"	2177mm	7'2"
<b>D</b>	Centre of mast to outside edge of canopy	2665mm	8'9"	2993mm	9'10"	3500mm	11'6"	4000mm	13'2"
<b>E</b>	Diagonal from centre of mast to corner	3639mm	11'11"	4101mm	13'6"	3473mm	11'5"	3950mm	13'0"
<b>F</b>	Total height to top of canopy*	2892mm	9'6"	2817mm	9'3"	2972mm	9'9"	2895mm	9'6"
<b>G</b>	Ground to central frame hub when open*	2150mm	7'0"	2071mm	6'10"	2226mm	7'4"	2149mm	7'0"

\*Portable Base installations will add 165mm to these measurements. Adding portable base wheels also will add a further 45-80mm/2-3". All sizings are +/- 2.5mm / 1/32" and subject to change without notice.

# COMMERCIAL CENTRE POLE UMBRELLA



## Features at a glance

- Commercial grade aluminium frame structure
- Stainless steel hardware for longevity
- Durable high performance hub and fittings
- Telescopic mast enables umbrella to clear most furniture when closing
- Robust 82.5mm / IMM mast with 3.4mm wall thickness

## Canopy

- Premium Sunbrella Acrylic - 100% Solution Dyed
- Waterproof Rating: >300mm water column
- Maintenance: All fabrics can be washed and replaced
- Weight: 315 g/m2
- Colourfastness: 7-8/8
- Shade Rating: UPF 50+

## Colour Options\*



\*other custom colours available on request.

## Accessories



### Rain Gutter

Adjoining square umbrellas can be connected with removable rain gutters to increase weatherproof area.

## BEST-IN-CLASS WARRANTY

Relax easy knowing your outdoor umbrella purchase is protected by the industries best warranty and customer support.



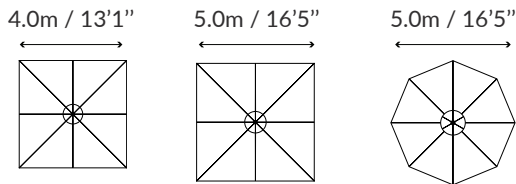
**Fabric  
Warranty**



**Frame  
Warranty**

# SU10 COMMERCIAL CENTRE POLE UMBRELLA

## Size & Configuration



## Mounting Options

### Surface Plate

For deck, patio and concrete mounting.



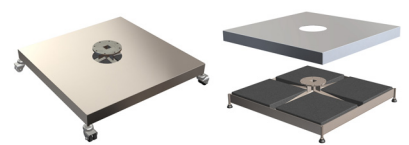
### In-Ground Anchor

For mounting with a concrete footing.



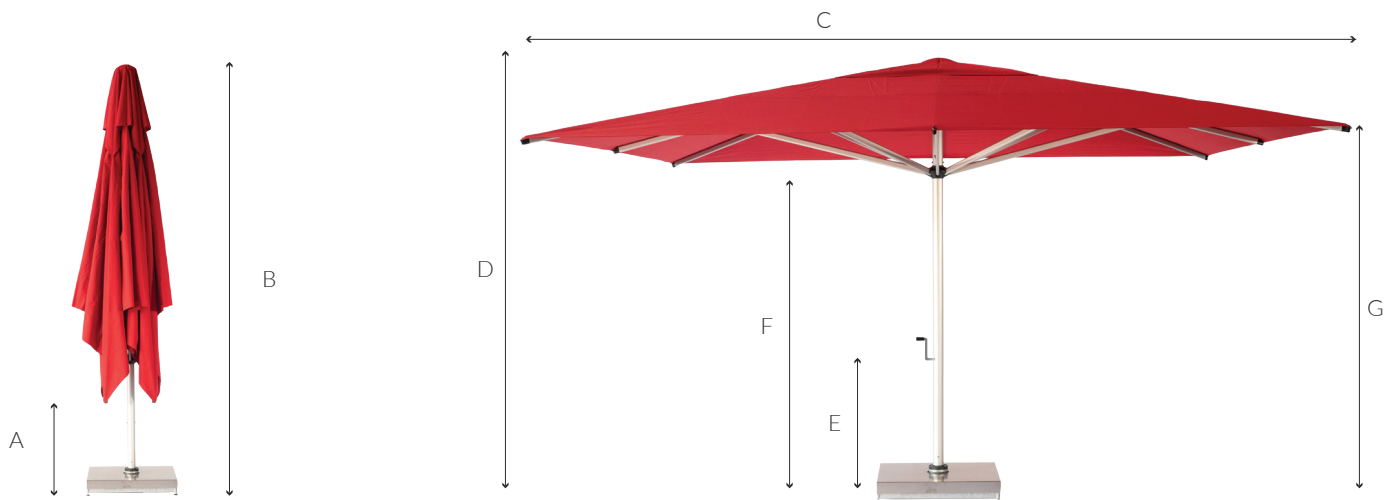
### Free-Standing Base\*

For complete customised maneuverability.



Pavers are required for ballast and are not supplied. Optional castor wheels shown.

## Umbrella Dimensions



### Diagram Legend

- A** Closed Canopy Clearance\*
- B** Overall Height when closed\*
- C** Canopy Width
- D** Overall Height\*
- E** Winder Handle Height\*
- F** Hub Height\*
- G** Arms Height\*

### 4.0m / 13'1" Square

- 900mm / 2'11"
- 3740mm / 12'3"
- 4000mm / 13'1"
- 2870mm / 9'5"
- 840mm / 2'9"
- 2110mm / 6'11"
- 2270mm / 7'5"

### 5.0m / 16'5" Square

- 730mm / 2'5"
- 4280mm / 14'1"
- 5000mm / 16'5"
- 3120mm / 10'3"
- 920mm / 3'0"
- 2260mm / 7'5"
- 2470mm / 8'1"

### 5.0m / 16'5" Octagon

- 1040mm / 3'5"
- 3530mm / 11'7"
- 4600mm / 15'1"
- 2810mm / 9'3"
- 840mm / 2'9"
- 2150mm / 7'1"
- 2270mm / 7'5"

\*Portable Base installations will add 120mm/4.7" to these measurements. Adding portable base wheels also will add a further 45-80mm/2-3".

# TILTING OFFSET UMBRELLA



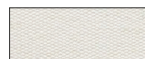
## Features at a glance

- Marine grade aluminium frame and stainless steel hardware for longevity
- Elegant and simple to operate tilt system
- Rotates 360°
- Durable high performance hub and fittings
- Custom designed protective cover included

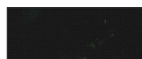
## Canopy

- Commercial Grade: 100% solution dyed
- Maintenance: All fabrics can be washed and are replaceable
- Shade Rating: UPF 50+
- Colourfastness: 4/5
- Weight: 290 g/m<sup>2</sup>
- Waterproof Rating: >300mm water column

## Colour Options\*



Egg Shell White



Black Widow



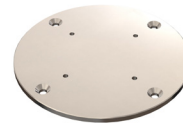
Boulder Grey

\*other non stock colours available on request.

## Mounting Options

### Surface Plate

For deck, patio and concrete mounting.



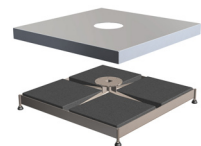
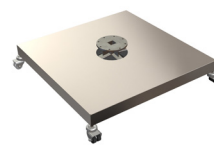
### In-Ground Anchor

For mounting with a concrete footing.



### Free-Standing Base\*

For complete customised maneuverability.



Pavers are required for ballast and are not supplied.  
Optional castor wheels shown.

## BEST-IN-CLASS WARRANTY

Relax easy knowing your outdoor umbrella purchase is protected by the industries best warranty and customer support.



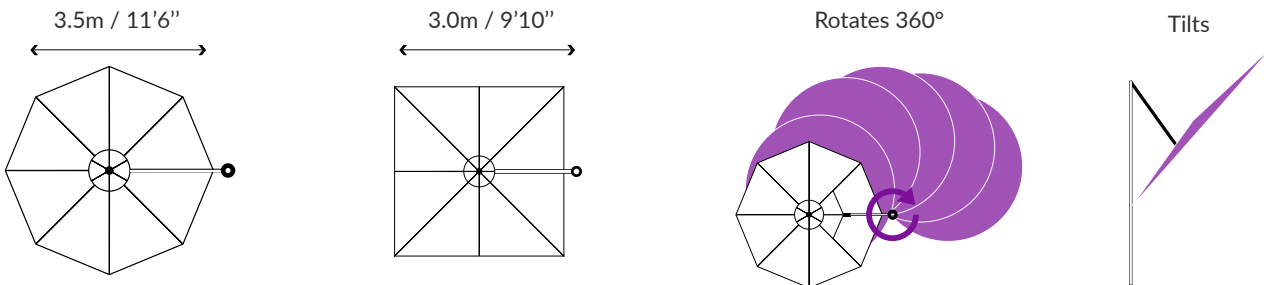
**Fabric  
Warranty**



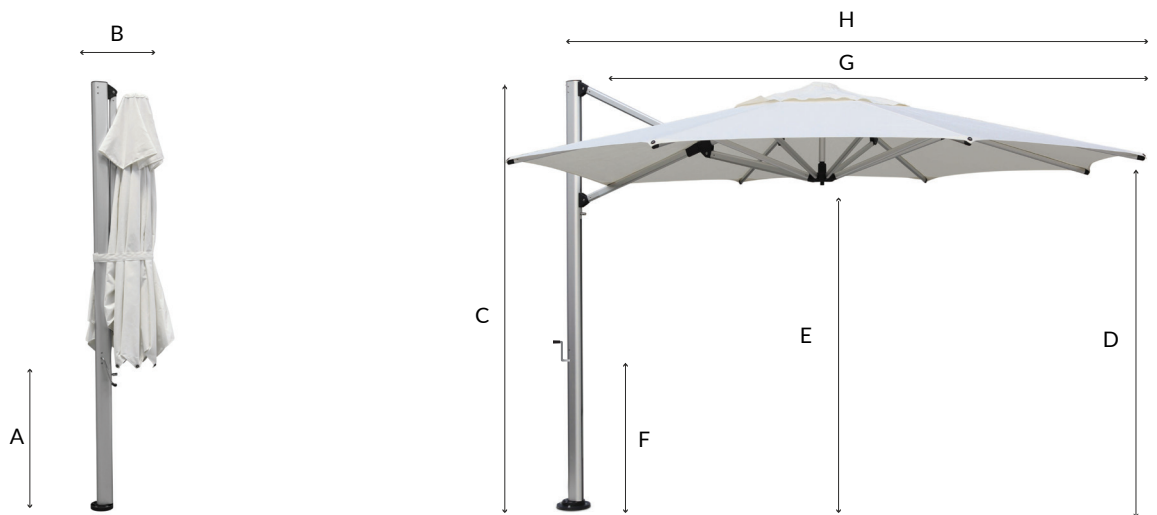
**Frame  
Warranty**

# SU4 TILTING OFFSET UMBRELLA

## Size & Configuration



## Umbrella Dimensions



### Diagram Legend

<b>A</b>	Clearance of Closed Strut Arms*
<b>B</b>	Depth of Umbrella When Closed
<b>C</b>	Overall Height*
<b>D</b>	Height to Edge of Canopy*
<b>E</b>	Height to Centre Hub*
<b>F</b>	Handle Height*
<b>G</b>	Canopy Width
<b>H</b>	Centre of Mast to Outside Edge of Canopy

### 3.5m / 11'6" Octagon

880mm / 2'11"
450mm / 1'6"
2723mm / 8'11"
2125mm / 7'0"
2065mm / 6'9"
940mm / 3'1"
3480mm / 11'5"
3595mm / 11'10"

### 3.0m / 9'10" Square

880mm / 2'11"
450mm / 1'6"
2723mm / 8'11"
2125mm / 7'0"
2065mm / 6'9"
940mm / 3'1"
3000mm / 9'10"
3595mm / 11'10"

\*Portable Base installations will add 120mm/4.7" to these measurements. Adding portable base wheels also will add a further 45-80mm/2-3".



# WALL MOUNTED UMBRELLA

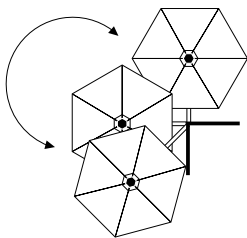


## Features at a glance

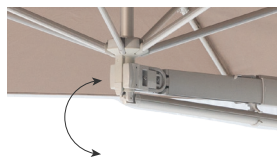
- Manufactured from top quality anodised aluminium, stainless steel and other non-corrosive materials
- Telescopic arm - 1400mm / 4'7" out to 1800mm / 5'11"
- Umbrella can swing horizontally
- Umbrella can tilt 18°



400mm / 1'4"  
Telescopic Arm  
Adjustment



Rotates 180°



Tilts 18°

## Canopy

- Premium Olefin 'COSLAN' - 100%
- Maintenance: All fabrics can be washed and are replaceable
- Shade Rating: UPF 40+
- Colourfastness: 6-7/8
- Weight: 190 g/m2

## Colour Options\*



\*other non stock colours available on request.

## Mounting



One Wall Bracket  
included as standard  
(extra brackets optional)

## BEST-IN-CLASS WARRANTY

Relax easy knowing your outdoor umbrella purchase is protected by the industries best warranty and customer support.



Fabric  
Warranty

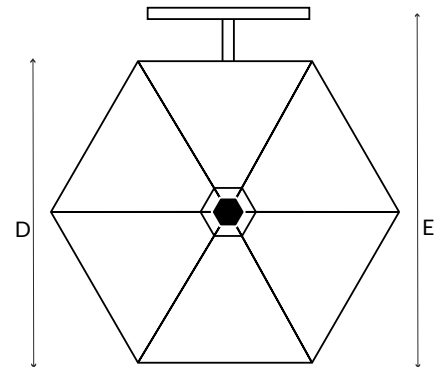
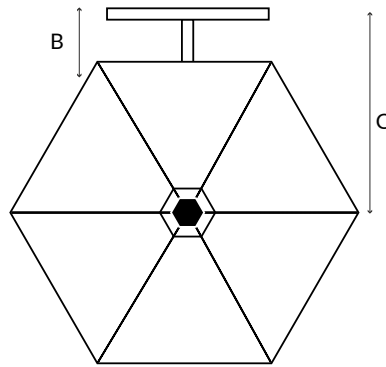
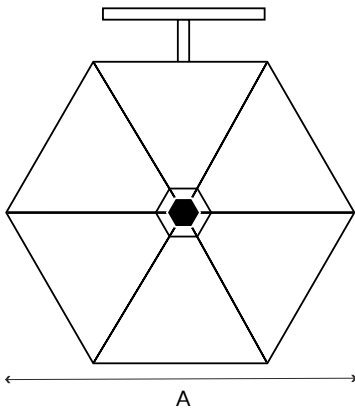


Frame  
Warranty

# SU3

## WALL MOUNTED UMBRELLA

### Umbrella Dimensions



### Diagram Legend

- A** Canopy Width
- B** Overall Depth from Wall
- C** Canopy Length
- D** Flat-edge to flat-edge
- E** Wall to canopy edge

2.7m / 8'10"

2700mm / 8'10"

230mm - 650mm / 0'9" - 2'2"

1520mm - 1920mm / 5'0" - 6'4"

2340mm / 7'8"

2570mm - 3000mm / 8'5" - 9'8"

# CAFE & RESORT UMBRELLA



## Features at a glance

- Simple and easy to open and close
- Heavy-duty double pulley system
- Commercial grade pulley rope
- Glass-filled nylon high-performance hubs and brackets
- Marine grade anodised aluminium frame and pole
- Stainless steel fastenings and components
- Commercial strength pole with a large diameter and thick aluminium wall.



All ShadowSpec SU2 Umbrellas have eight full strength 20mm x 33mm / 3/4" x 1 1/2" strut arms.

## Canopy

- Premium 100% solution dyed canopy
- Maintenance: All fabrics can be washed and are replaceable
- Shade Rating: UPF 50+

## Colour Options\*



\*other non stock colours available on request.

## Custom Branding

We specialise in custom branding umbrellas with your logo/brand and message.



## BEST-IN-CLASS WARRANTY

Relax easy knowing your outdoor umbrella purchase is protected by the industries best warranty and customer support.



**Fabric  
Warranty**



**Frame  
Warranty**

# SU2

## CAFE & RESORT UMBRELLA

### Mounting Options



**Steel Flat Plate Base**  
Single plate (approx 30kgs) recommended for 2.0m / 6'7" square. & 2.7m / 8'10" octagon sizes.

Double plate recommended for 3.0m / 9'8" sq & 4.0m / 13'1" oct sizes.



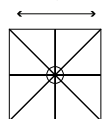
**Concrete Base**  
Is suitable for 2.0m / 6'7" square & 2.7m / 8'10" Octagon sizes only.



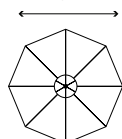
**Surface Plate**  
Bolt down mounting option. Suitable for all SU2 sizes.

### Size & Configuration

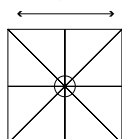
2.0m / 6'7"



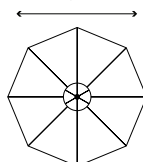
2.7m / 8'10"



3.0m / 9'10"



4.0m / 13'1"



### Umbrella Dimensions



#### Diagram Legend

	2.0m / 6'7"	2.7m / 8'10"	3.0m / 9'10"	4.0m / 13'1"
<b>A</b> Overall Height*	2600mm / 8'6"	2645mm / 8'8"	2935mm / 9'8"	2850mm / 9'4"
<b>B</b> Clearance of Closed Strut Arms*	1150mm / 3'10"	1250mm / 4'1"	780mm / 2'7"	815mm / 2'8"
<b>C</b> Canopy Width*	2000mm / 6'7" sq.	2700mm / 8'10" dia.	3000mm / 9'10" sq.	4000mm / 13'1" dia.
<b>D</b> Head Clearance*	2200mm / 7'3"	2200mm / 7'3"	2295mm / 7'6"	2260mm / 7'5"
<b>E</b> Pole outside diameter	38mm / 1½"	38mm / 1½"	48mm / 2"	48mm / 2"

Note: All measurements are rounded and are subject to change.

Adding portable base wheels also will add a further 45-80mm/2-3"